

Background on Siteground

Siteground.com is a typical Fantastico host and one of the [Tiki friendly hosts](#) so it is used as an example for this documentation. All other Fantastico hosts will be very similar. Shared hosting provides mainly an inexpensive, easy hosting service for low traffic wikis. Their customer service is very good, and their interface is user friendly, but their servers are heavily loaded and sometimes [Tiki performance](#) is kinda slow. Overall a good bet for a starter wiki host.

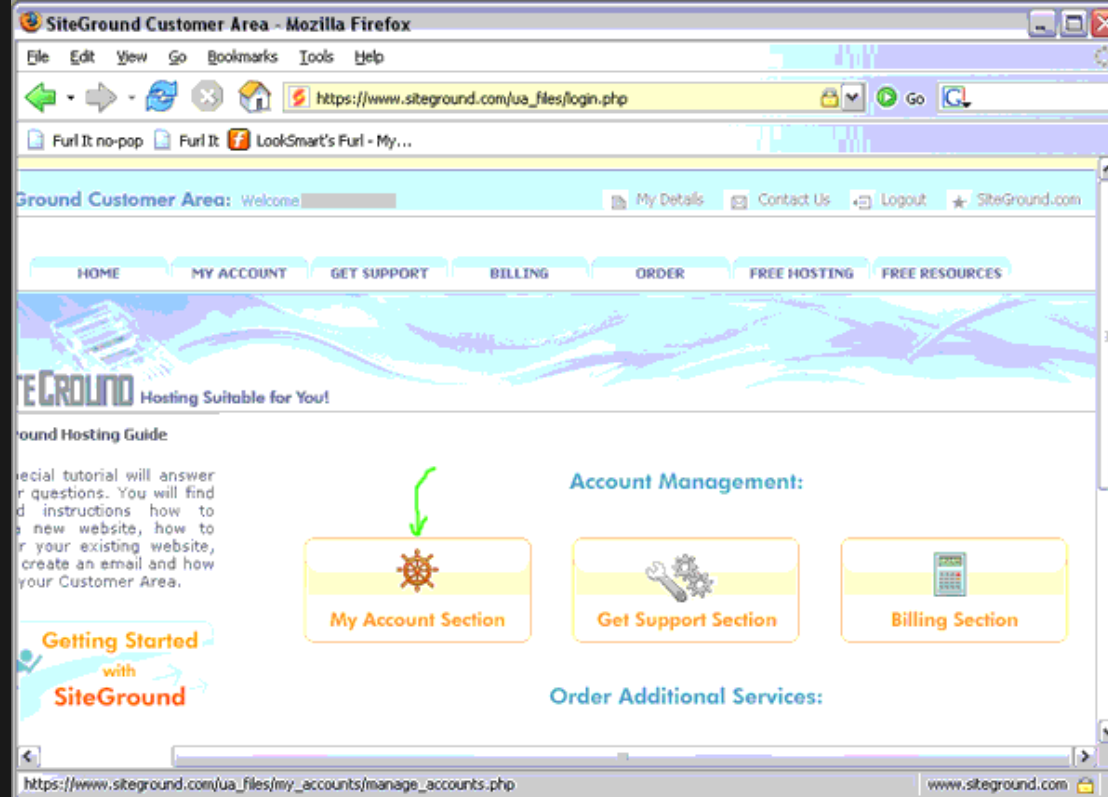
- Includes CPanel and Fantastico - includes installation through fantastico and webanalysis and other tools through cpanel

Installation

After securing an account and choosing a domain name, installation is straightforward. Installation is either [install by FTP](#), or with Fantastico with siteground you cannot use [SSH](#).

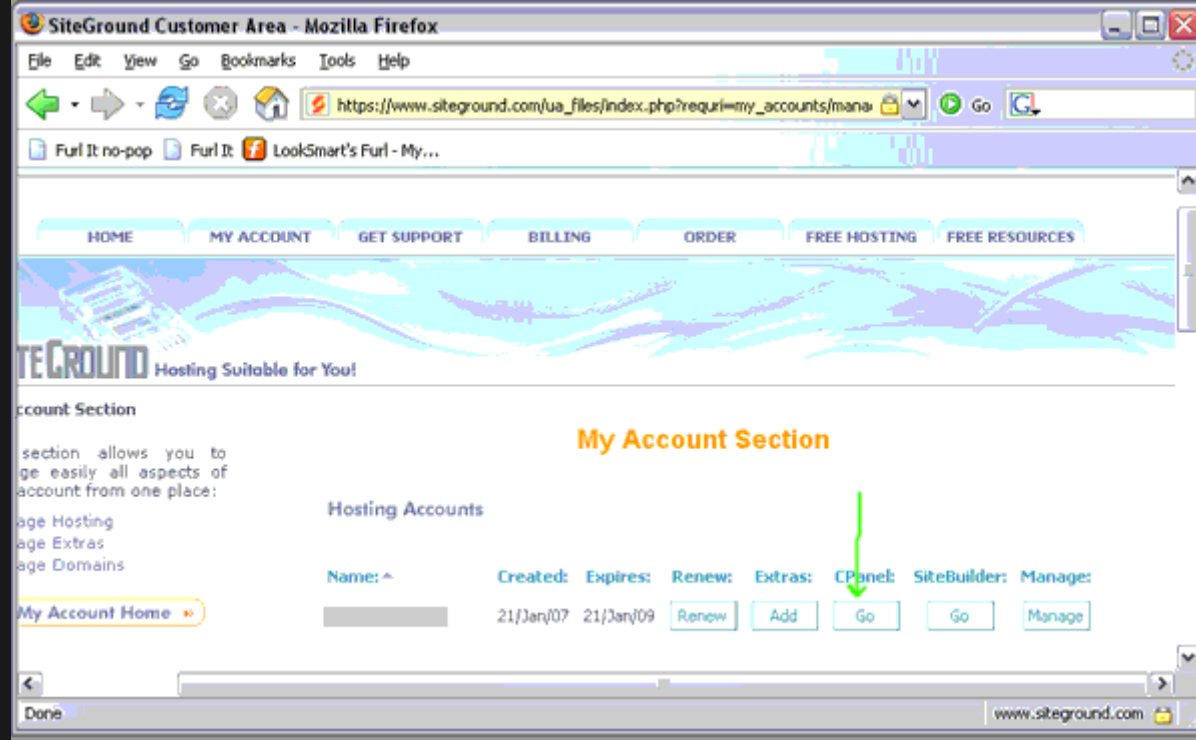
MANAGE YOUR ACCOUNT.

Cpanel is a utility that allows you to manage your site without knowing unix or programming. To find cpanel, login, and click as shown below.



ACCESS CPANEL

You'll see the following options. Click on cpanel and login.



ACCESS FANTASTICO

When CPanel comes up, ignore most of it for now. Click on Fantastico at the bottom.

CPANEL 10

Welcome Last login from: 127.0.0.1

Please update your contact information here.

General account information:

| | |
|------------------------|---------------------|
| Hosting package | siteground |
| Shared Ip Address | |
| Subdomains | 4 / unlimited |
| Parked Domains | 3 / unlimited |
| Addon Domains | 3 / 3 |
| MySQL Databases | 5 / unlimited |
| Postgresql Databases | 0 / unlimited |
| Disk Space Usage | 228.95 Megabytes |
| MySQL Disk Space | 19.67 Megabytes |
| Disk space available | 249771.05 Megabytes |
| Bandwidth (this month) | 48.66 Megabytes |
| Email Accounts | 0 / unlimited |
| Email Forwarders | 0 |
| Auto-responders | 0 |
| Email Filters | 0 |
| Ftp Accounts | 3 / unlimited |

General server information:

| | |
|------------------|--------------------|
| Operating system | Linux |
| Kernel version | 2.6.9-42.0.3.ELsmp |
| Machine Type | i686 |
| Apache version | 1.3.37 (Unix) |
| PERL version | 5.8.7 |
| Path to PERL | /usr/bin/perl |
| Path to sendmail | /usr/sbin/sendmail |

Mail Webmail Parked Domains Addon Domains FTP Manager

File Manager Disk Space Usage Password Protect Directories Error pages Subdomain

MySQL MySQL@ Databases PostgreSQL Databases Redirects FrontPage@ Extensions Web/FTP Stats

Raw Access Logs Raw Log Manager Error log Subdomain Stats PhpMyChat

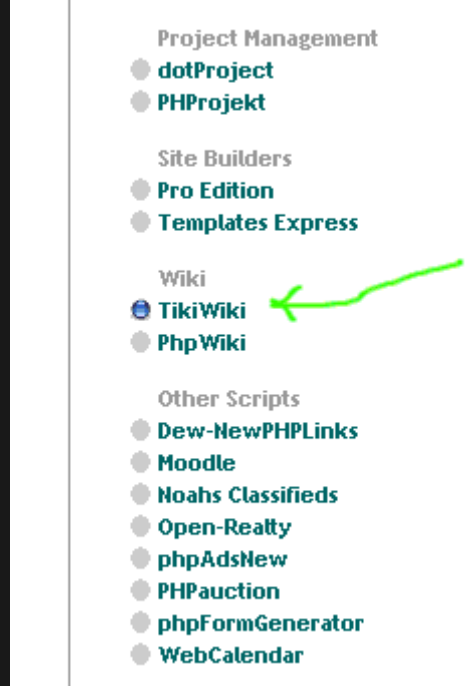
CGI Center Scripts Library Cron jobs Network Tools MIME Types

Apache Handlers HotLink Protection Index Manager IP Deny Manager Change Language

Statistics Software Configuration **Fantastico**

INSTALL TIKI

Fantastico is a installer. You'll use it to install Tiki. Once fantastico comes up, click on Tiki Wiki CMS Groupware.



Then, select new installation. Notice for example that Tiki has been installed on karateforge.com. This same tool is used for future upgrades and remembers past installations.



Short description: TikiWiki is designed to be an international, clean and extensible Content Management System and Groupware that can be used to create all sorts of web applications, sites, portals, intranets and extranets. TikiWiki also works great as a web-based collaboration tool. TikiWiki has a lot of native options and sections that you can enable/disable as you need them.

Homepage: <http://www.tikiwiki.org/>

TikiWiki support forum

(We are not associated with the support forum)

New Installation (1.9.7)

Disk space required: 42.96 MB

Disk space available: 249770.5 MB




Current installations:

| | |
|--|--|
| | Visit site Remove |
| karateforge.com/ (1.9.7) | Visit site Remove |
| | Visit site Remove |
| | Visit site Remove Upgrade to 1.9.7 |

Choose your domain to install. Then click install. Notice that the administrator login is set as admin with password admin.

TikiWiki



Install TikiWiki (1/3)

Installation location

Install on domain

Install in directory

Leave empty to install in the root directory of the domain (access example: <http://domain/>).
Enter only the directory name to install in a directory (for <http://domain/name/> enter **name** only). This directory SHOULD NOT exist, it will be automatically created!

Admin access data

Administrator-username
(you need this to enter the protected admin area)

Password (you need this to enter the protected admin area)

You can change the admin login/password later in the administration area of your TikiWiki installation.

If all goes well, you'll see something similar to the following, and can click "finish".

TikiWiki

Install TikiWiki (2/3)

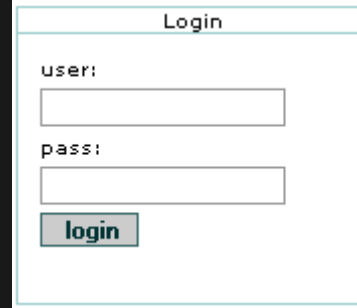
The MySQL database and MySQL user will be created and used for this installation.

- You chose to install in the main directory of the domain [how2why4.com.](http://how2why4.com/)
- The access URL will be: <http://how2why4.com/>.

Click on **Finish installation** to continue.

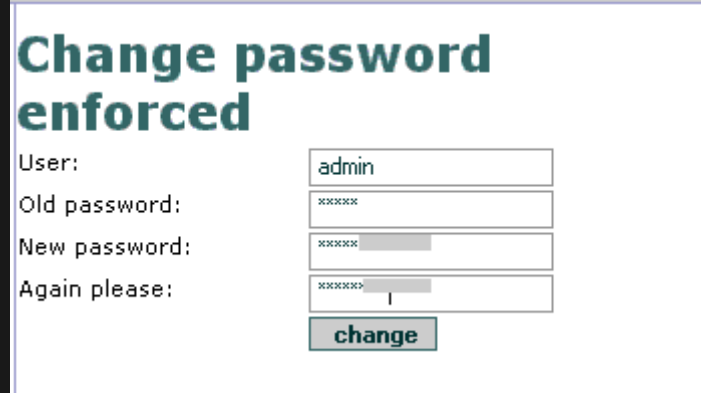
CHANGE ADMIN PASSWORD

Immediately after fantastico installation, change the admin password before someone else does. Go to your site and login:



A login form titled "Login" with two input fields labeled "user:" and "pass:", and a "login" button.

Use the admin login and admin password. The system will force you to change the password as follows.



A form titled "Change password enforced" with fields for "User:" (admin), "Old password:", "New password:", and "Again please:", and a "change" button.

INSTALLATION COMPLETE

Tiki is installed and you're set up as the administrator.

Alias

- Siteground Installation